

PLEASE INCLUDE A COPY OF YOUR LIABILITY
INSURANCE AND A CONFIRMATION THAT THE ANY
OF YOUR OWN PROPERTY TAXES ARE NOT IN
ARREARAGE. THANK YOU!

NOTICE FOR BIDS

Notice is hereby given that sealed bids will be received by the Board of County Commissioners, Clinton County, Ohio, Clinton County Courthouse, 2nd Floor, 46 S. South Street, Wilmington, Ohio 45177 until the 21st day of September 2022 at 10:00 a.m. for the lease of certain real property owned by the County. Copies of bid packets, containing maps, and proposed lease forms may be picked up at the office of the Board of County Commissioners of Clinton County, Ohio, Second Floor, Clinton County Courthouse, Wilmington, Ohio.

The proposed lease for each tract is for agricultural purposes only, and provides for a term of three (3) years, commencing on the 1st day of January 2023, and ending on the 31st day of December, 2025. The rental fee for each tract is to be paid in advance on an annual basis, being due and payable on or before the 31st day of January of each year, commencing with January 31, 2023, through and including January 31, 2025. Tenant shall be entitled to possession of the premises beginning January 1, 2023. Tenant shall be responsible for the cost of all inputs, casualty and liability insurance, general maintenance and upkeep. Potential Bidders are invited and encouraged to review the maps and read the proposed leases for other and more specific terms and conditions, as the successful bidder shall be bound by the terms and conditions contained in the proposed lease.

The following are up for bid:

- TRACT 1: Being designated as FSA Farm No. 3795, consisting of approximately 121.67 acres located on US Route 68. Being a 61.76 acre field (no. 6 as designated on FSA map) and a 59.91 acre field (no. 11 as designated on FSA map)
- TRACT 2: Being designated as FSA Farm No. 4807, consisting of approximately 37.64 acres located on State Route 28. Being a 2.30 acre field (no. 4 as designated on FSA map); a 5.81 acre field (no. 13 as designated on FSA map); a 15.07 acre field (no. 12 as designated on FSA map); and 14.46 acre field (no. 16 as designated on FSA map)
- TRACT 3: Being approximately 39.57 acres as designated on FSA Farm Nos. 4854 and 5603. Being an 11.32 acre field (no.6 as designated on FSA map for Farm No. 4854); a 4.14 acre field (part of the 6.61 acre field designated field no. 7 on FSA Map for Farm No.5603); a 14.32 acre field (no. 1 as designated on FSA map for Farm No. 5603); A 2.2 acre field (no. 2 as designated on FSA map for Farm No. 5603); and 7.59 acre field (no. 3 as designated on FSA map Farm No. 5603). An aerial view of the above 4.14 acre tract is provided herein in the bidder packet.

A more complete description of the above tracts can be found in the bidder's packet.

Bids shall be sealed and marked respectively as "Bid for Lease of Tract 1, 2, or 3". Leases will be awarded to the highest and best bidder for each tract. **TRACT 1, 2, AND 3 SHALL BE BID SEPARATELY.** Bids shall be given on **a price per tract basis**, said tracts being approximations of aggregate acreage per farm as provided by the Clinton County Farm Service Agency. No bidder may withdraw his bid within sixty (60) days after the actual date of the opening thereof. The Board of County Commissioners, Clinton County, Ohio reserves the right to reject any and all bids and to waive any bid irregularities.

All bids must be submitted to the Commissioners' Office, Clinton County Courthouse, 46 S. South Street, 2nd Floor Wilmington, OH 45177 by September 21, 2022 at 10:00 a.m.

Lisa Hipke, Clerk
Board of County Commissioners
Clinton County, Ohio
(Weds. Sept. 7 & 14, 2022) WNJ



CLINTON COUNTY COMMISSIONERS

Clinton County Courthouse
46 S. South Street, Suite 213
Wilmington, Ohio 45177

Phone: (937) 382-2103

Fax: (937) 383-2884

Board of Commissioners:

Brenda K. Woods
Kerry R. Steed
Mike McCarty

Clerk of the Board:

Lisa Hipke

Deputy Clerk:

September 7, 2022

MEMO

**TO: ALL RECIPIENTS OF THE CLINTON COUNTY FARM BID
PACKETS**

**FROM: BOARD OF COUNTY COMMISSIONERS
CLINTON COUNTY OHIO**

RE: TRACT #3 COUNTY LEASED FARM #4854

**THIS MEMO IS TO INFORM YOU THAT DUE TO SECURITY CONCERNS
RELATIVE TO THE CLINTON COUNTY ADULT DETENTION CENTER,
LOCATED ON 1645 DAVIDS DRIVE, WILMINGTON, OHIO. NO CORN
MAY BE PLANTED IN TRACT #3, FARM #4854**

**IF YOU HAVE ANY QUESTIONS OR CONCERNS PLEASE CONTACT OUR
OFFICE AT 937-382-2103.**



Please complete the County Farm Lease bid form below.

Return the completed form to the

Clinton County Commissioners' Office ,

46 S. South St. Suite # 213, Clinton County Courthouse, Wilmington, Ohio 45177

No later than 10:00 a.m. Wednesday, September 21, 2022

BIDDERS MAY CHOSE ANY OR ALL OPTIONS

BID FORM

NAME:

ADDRESS:

TELEPHONE HOME:

CELL:

CONTACT PERSON:

TRACT #1

\$ _____

TRACT #2

\$ _____

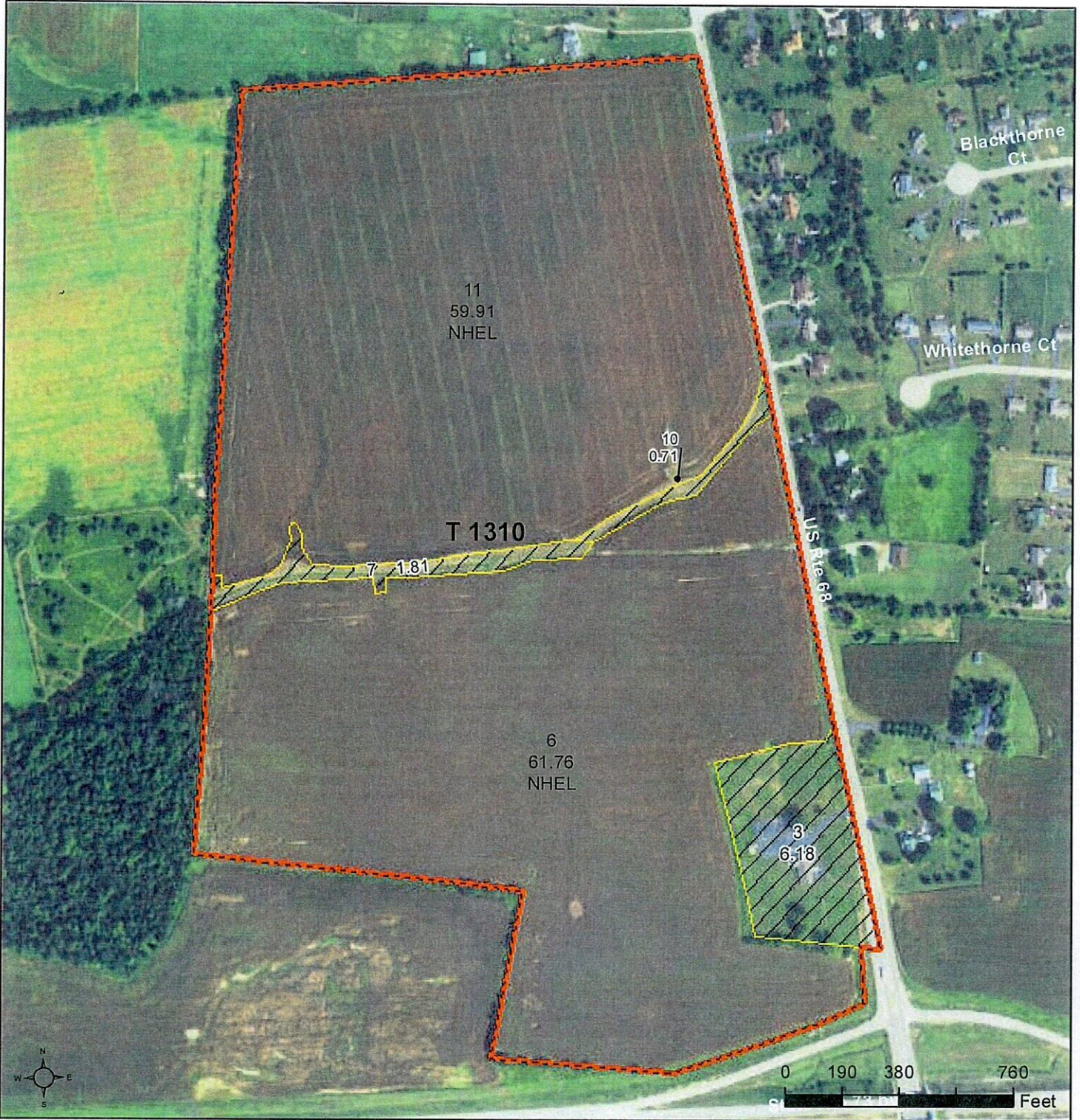
TRACT #3

\$ _____



United States
Department of
Agriculture

Clinton County, Ohio



Common Land Unit Tract Boundary

Non-Cropland
 Cropland

Wetland Determination Identifiers

- Restricted Use
- Limited Restrictions
- Exempt from Conservation Compliance Provisions

Tract Cropland Total: 121.67 acres

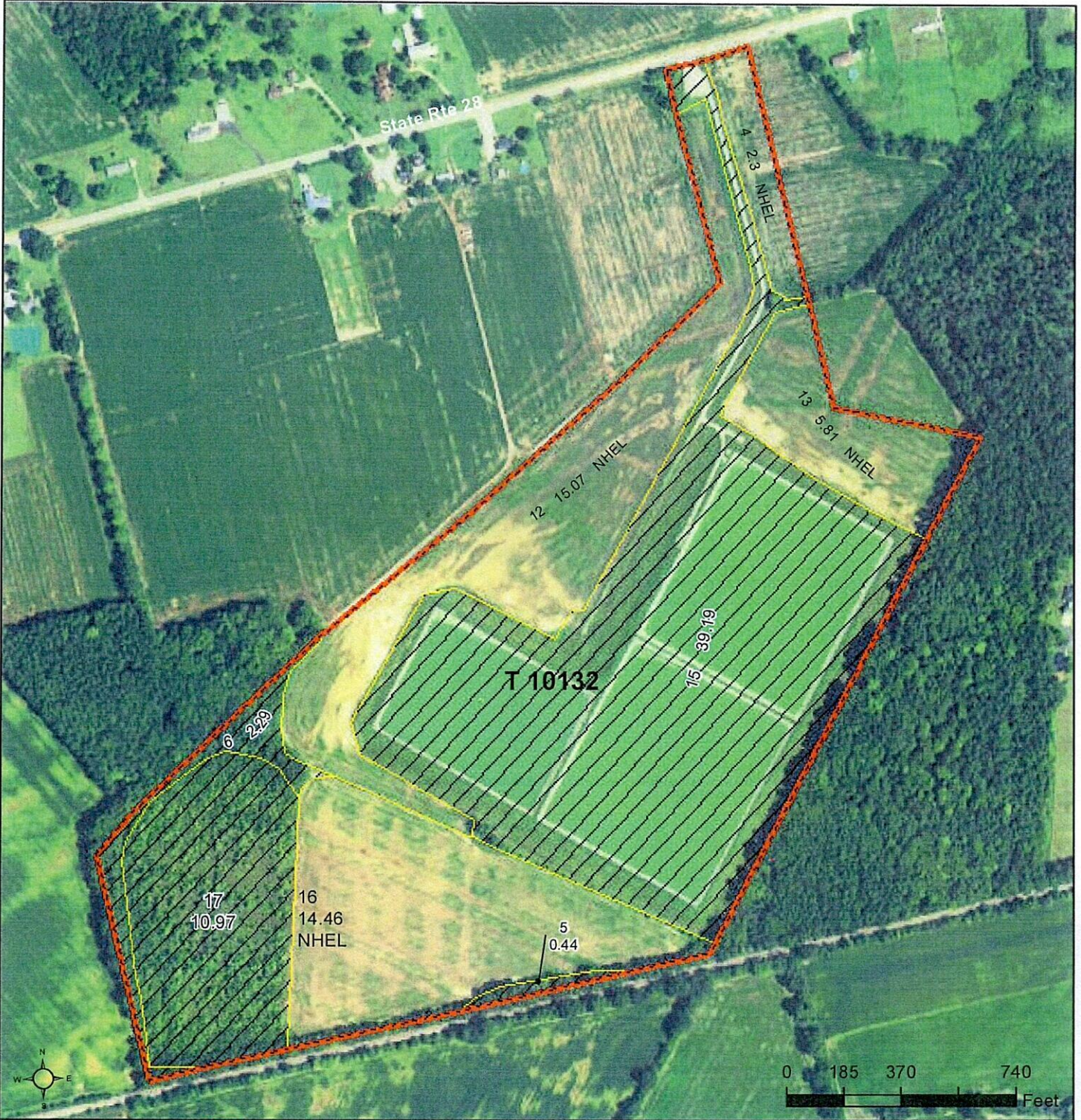
2016 Program Year

Map Created February 19, 2016

Farm 3795

Tract 1310

United States Department of Agriculture (USDA) Farm Service Agency (FSA) maps are for FSA Program administration only. This map does not represent a legal survey or reflect actual ownership; rather it depicts the information provided directly from the producer and/or National Agricultural Imagery Program (NAIP) imagery. The producer accepts the data 'as is' and assumes all risks associated with its use. USDA-FSA assumes no responsibility for actual or consequential damage incurred as a result of any user's reliance on this data outside FSA Programs. Wetland identifiers do not represent the size, shape, or specific determination of the area. Refer to your original determination (CPA-026 and attached maps) for exact boundaries and determinations or contact USDA Natural Resources Conservation Service (NRCS).



Common Land Unit Tract Boundary

Non-Cropland
 Cropland

Wetland Determination Identifiers

- Restricted Use
- Limited Restrictions
- Exempt from Conservation Compliance Provisions

Tract Cropland Total: 37.64 acres

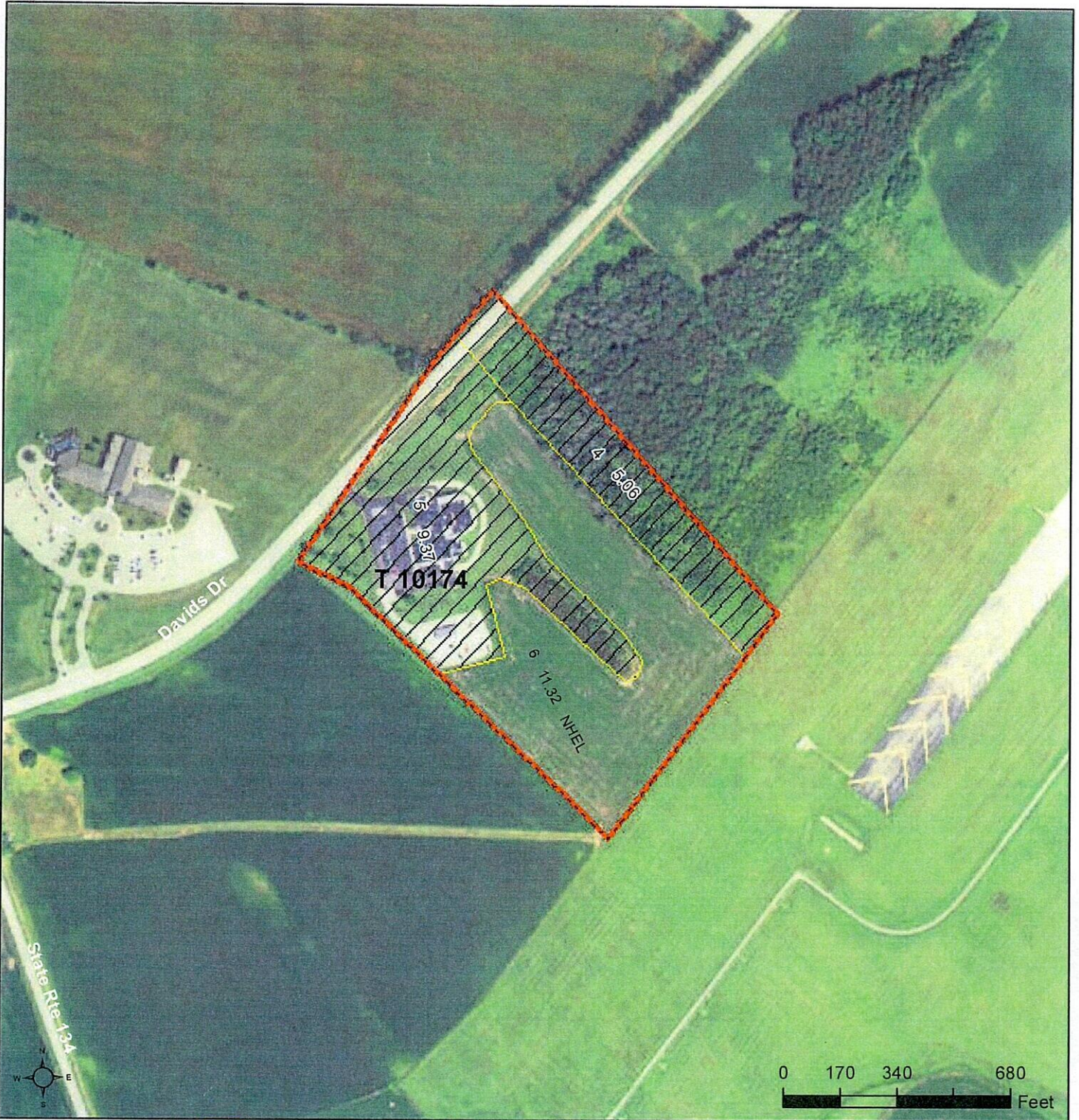
2016 Program Year

Map Created February 19, 2016

Farm 4807

Tract 10132

United States Department of Agriculture (USDA) Farm Service Agency (FSA) maps are for FSA Program administration only. This map does not represent a legal survey or reflect actual ownership; rather it depicts the information provided directly from the producer and/or National Agricultural Imagery Program (NAIP) imagery. The producer accepts the data 'as is' and assumes all risks associated with its use. USDA-FSA assumes no responsibility for actual or consequential damage incurred as a result of any user's reliance on this data outside FSA Programs. Wetland identifiers do not represent the size, shape, or specific determination of the area. Refer to your original determination (CPA-026 and attached maps) for exact boundaries and determinations or contact USDA Natural Resources Conservation Service (NRCS).



Common Land Unit Tract Boundary

- Non-Cropland
- Cropland

Wetland Determination Identifiers

- Restricted Use
- Limited Restrictions
- Exempt from Conservation Compliance Provisions

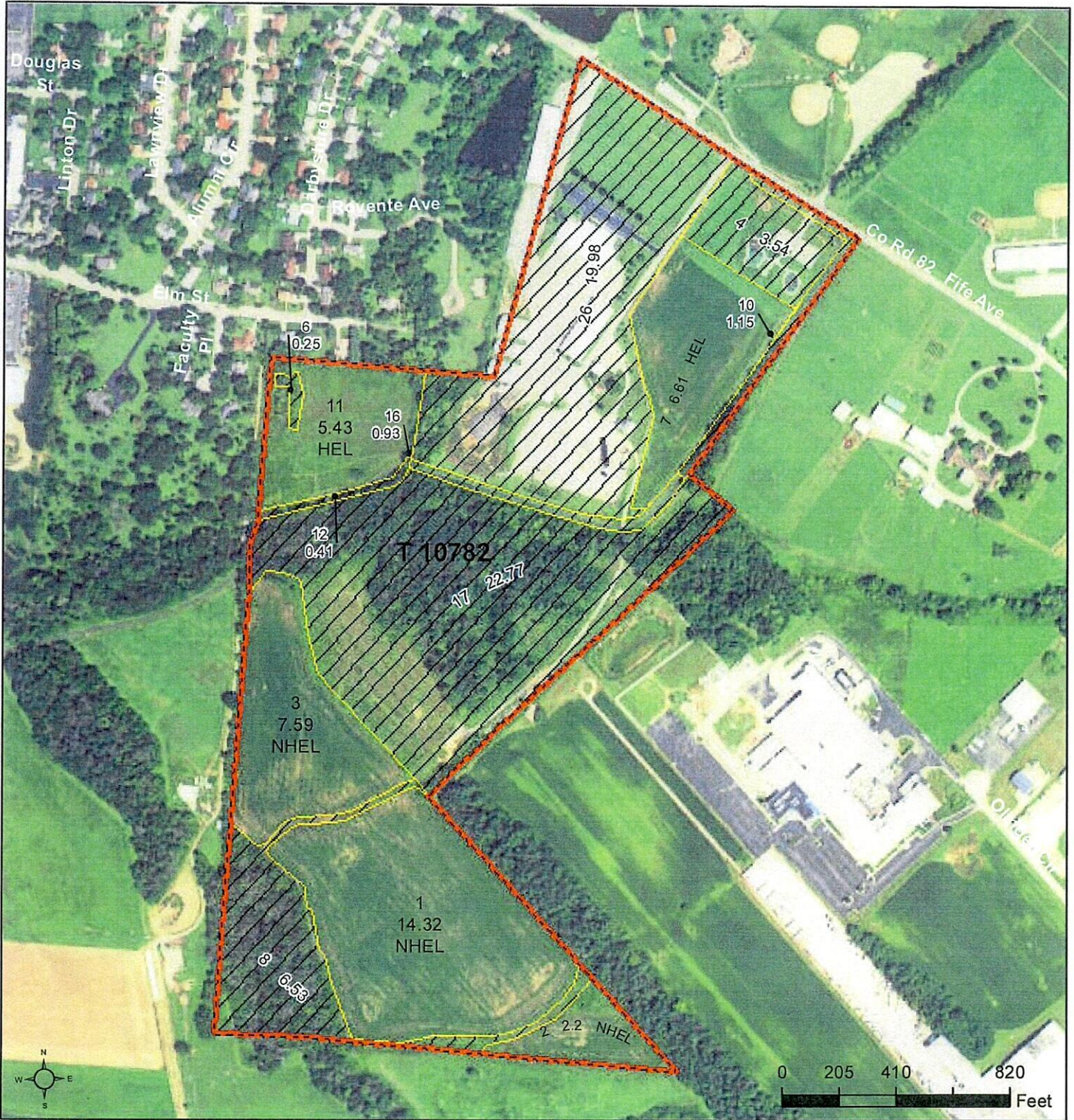
Tract Cropland Total: 11.32 acres

2016 Program Year

Map Created February 19, 2016

Farm 4854
Tract 10174

United States Department of Agriculture (USDA) Farm Service Agency (FSA) maps are for FSA Program administration only. This map does not represent a legal survey or reflect actual ownership; rather it depicts the information provided directly from the producer and/or National Agricultural Imagery Program (NAIP) imagery. The producer accepts the data 'as is' and assumes all risks associated with its use. USDA-FSA assumes no responsibility for actual or consequential damage incurred as a result of any user's reliance on this data outside FSA Programs. Wetland identifiers do not represent the size, shape, or specific determination of the area. Refer to your original determination (CPA-026 and attached maps) for exact boundaries and determinations or contact USDA Natural Resources Conservation Service (NRCS).



tl_2014_39027_roads

Common Land Unit

- Non-Cropland
- Cropland

2016 Program Year

Map Created February 19, 2016

Farm 5603
Tract 10782

Wetland Determination Identifiers

- Restricted Use
- Limited Restrictions
- Exempt from Conservation Compliance Provisions

Tract Cropland Total: 36.15 acres

United States Department of Agriculture (USDA) Farm Service Agency (FSA) maps are for FSA Program administration only. This map does not represent a legal survey or reflect actual ownership; rather it depicts the information provided directly from the producer and/or National Agricultural Imagery Program (NAIP) imagery. The producer accepts the data 'as is' and assumes all risks associated with its use. USDA-FSA assumes no responsibility for actual or consequential damage incurred as a result of any user's reliance on this data outside FSA Programs. Wetland identifiers do not represent the size, shape, or specific determination of the area. Refer to your original determination (CPA-026 and attached maps) for exact boundaries and determinations or contact USDA Natural Resources Conservation Service (NRCS).



**Clinton County Commissioners' County Home Farm:
Little Hearts, Big Smiles Site
1328 Fife Ave.**

#5603